

January 14th 2016

Dreaded Europa Door Hinges

After deliberating for a month or two I finally decided to attack the removal of the doors on my '69 S2, partly because I was psyched and mainly because I'd finished everything else. We all know the drama stories; I certainly wasn't looking forward to it and had a length of rope ready should I decide to end it all.

It was impossible to try to remove the nuts from inside as they had been covered in "Bondo" or something similarly nasty by a previous Mr Fix It. Not being the patient type and not relishing the task of hand sawing away for days, I lit a cigar poured a drink and came to the conclusion that the reciprocating saw was the way to go, I used high quality 9" blades, Fig. 1



Fig 1

Next was to protect the bodywork whilst cutting the pins. I made some cardboard templates and used them cut the protectors from some spare sheet steel. Fig 2

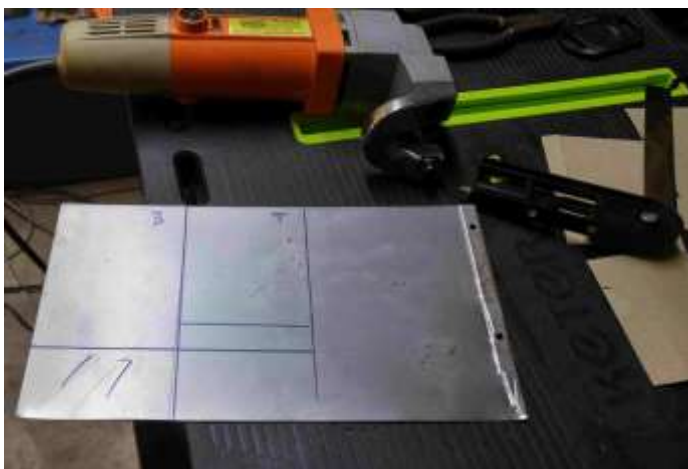


Fig 2

Next was to bend a lip approximately 10mm wide, stick some masking tape to the wing and door and then tape the protectors to that. Figs 3 & 4

Dreaded Europa Door Hinges cont

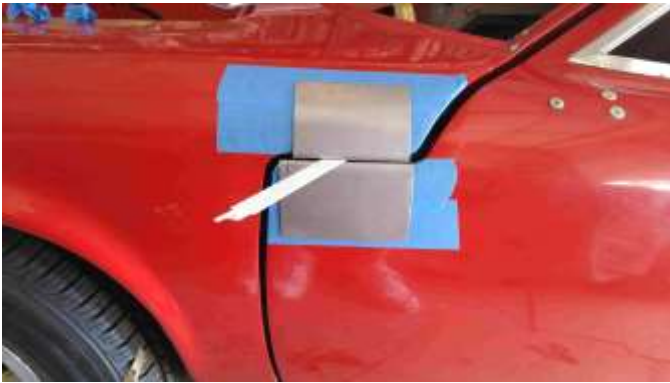


Fig 3

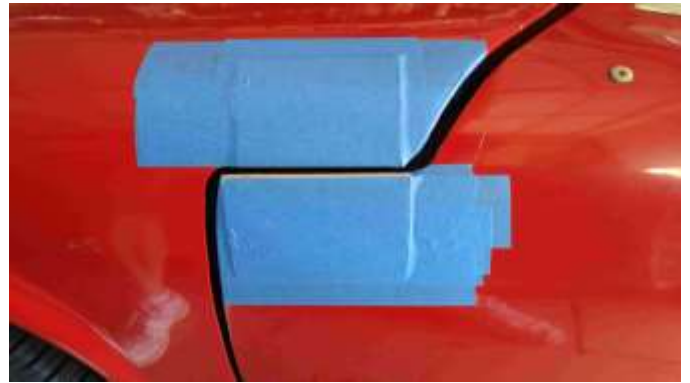
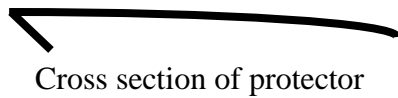


Fig 4



Cross section of protector

It took approximately 5 mins to cut through the top hinge and the same for the bottom, to ensure the door didn't fall onto the blade whilst cutting the bottom I used plastic wedges, (the type for applying body filler) between the door and the sill. Now time for a puff on the cigar and a drink – celebration.

Being careful with the saw, meant there was minimal trauma to any of the bobbins. Fig 5



Fig 5

Once the doors were off, the easiest way to remove the internals was to use the reciprocating saw again and cut out an inch section of the rods, accessing them through the slot in the leading edge of the door. Fig 6

Dreaded Europa Door Hinges cont

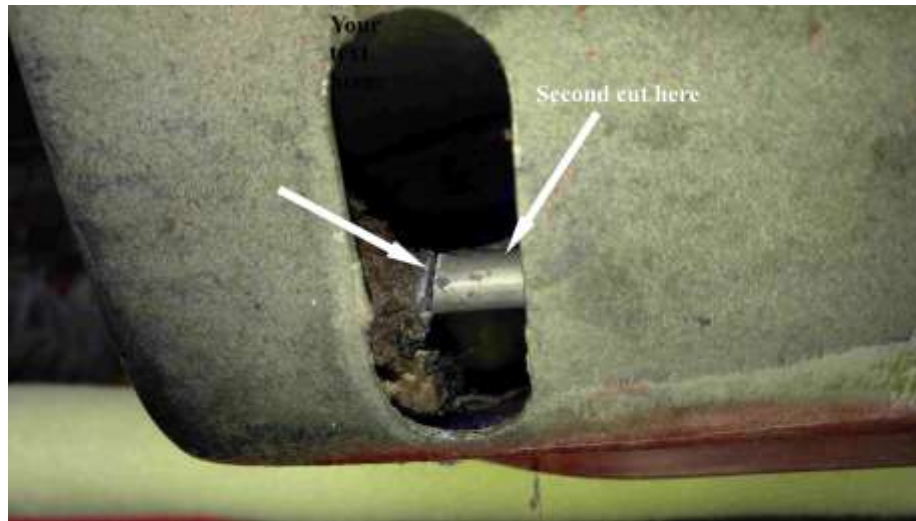


Fig 6

With this section out it was easy to tap the hinge rods back into the door cavity, I had to trim one end of the collet on one door where I hadn't got exactly flush with the bobbin.

All in all, the total time, including celebrations between doors....took me 2 hours and still left with me sanity!. Figs 7 & 8 show what the internals looked like. Now to overhaul the window motors, I have new seals for all of the glass and need to repair one of the locks and we're ready for paint! Much easier to install the new interior with the doors removed. Hope some of this is helpful to you.



Fig 7



Fig8